

**B131R..**

## Mobile oilfree suction pump units

The mobile suction pump allows upgrading old SF<sub>6</sub> maintenance devices. Thus it is possible to recover the SF<sub>6</sub> gas from the gas compartment to a final vacuum of 1 mbar by connecting in series the mobile suction pump.



- Separate electric control
- Three different versions or pump performances are available
- Self-closing couplings for emission-free gas handling
- Digital vacuum indication (0 - 400 mbar)
- Steerable and fixing rollers for comfortable handling
- Different wrenches are available as accessories

B131R41

**Mobile oilfree suction pump unit 15 m<sup>3</sup>/h**

Final vacuum < 1 mbar



#### Technical data:

Dimensions: L 550 mm, W 430 mm, H 800 mm
Weight: 80 kg
Operating voltage: 200 - 240 V / 50 - 60 Hz alternating current

#### Standard equipment:

DILO couplings DN20
Vacuum indication (0 - 400 mbar)
Fixing and steerable rollers
Different wrenches
Paint: orange (RAL 2004)
2 operating manuals in German, English or French

## B131R..

# Mobile oilfree suction pump units

B131R13

**Mobile oilfree suction pump unit 35 m<sup>3</sup>/h**

Final vacuum < 1 mbar



### Technical data:

Dimensions: L 730 mm, W 550 mm, H 980 mm
Weight: 132 kg
Operating voltage: 220 - 240 V / 50 - 60 Hz alternating current

### Standard equipment:

DILO couplings DN20 and DN40
Vacuum indication (0 - 400 mbar)
Fixing and steerable rollers
Different wrenches
Paint: orange (RAL 2004)
2 operating manuals in German, English or French

B131R61

**Mobile oilfree suction pump unit 100 m<sup>3</sup>/h**

Final vacuum < 1 mbar



#### Technical data:

Dimensions: L 1,060 mm, W 740 mm, H 1,230 mm
Weight: 230 kg
Operating voltage: 380 - 480 V / 50 - 60 Hz 3-phase current

#### Standard equipment:

DILO couplings DN20 and DN40
Vacuum indication (0 - 400 mbar)
Fixing and steerable rollers
Different wrenches
Paint: orange (RAL 2004)
2 operating manuals in German, English or French

**B131R..****Mobile oilfree suction pump units**

B131R..

**Mobile oilfree suction pump unit****Optional equipment (mounted) at an extra charge for all oilfree suction pump units:**

Additional price for electrical special voltage for B131R13 and B131R41 100 V / 50 - 60 Hz or 110 - 127 V / 60 Hz or 200 V / 50 - 60 Hz	<b>6-0005-R046</b>
--	--------------------

**Optional accessories at an extra charge for all oilfree suction pump units:**

Protective cover for suction pump unit B131R13	<b>B131R13G01</b>
Protective cover for suction pump unit B131R41	<b>B131R41G08</b>
5 m long rubber hose DN20 with coupling tongue part DN20 on both ends	<b>6-1017-R050</b>
7 m long rubber hose DN20 with coupling tongue part DN20 on both ends	<b>6-1017-R070</b>
10 m long rubber hose DN20 with coupling tongue part DN20 on both ends	<b>6-1017-R100</b>
5 m long wire-braided hose DN40 with coupling tongue part DN40 on both ends	<b>6-1076-R050</b>
10 m long wire-braided hose DN40 with coupling tongue part DN40 on both ends	<b>6-1076-R100</b>
5 m long wire-braided hose DN40 with coupling tongue part DN40 on one end and coupling tongue part DN20 on the other end	<b>6-1080-R050</b>
10 m long wire-braided hose DN40 with coupling tongue part DN40 on one end and coupling tongue part DN20 on the other end	<b>6-1080-R100</b>
Additional operating manual on CD-ROM	<b>6-0004-R213</b>

**Packing:**

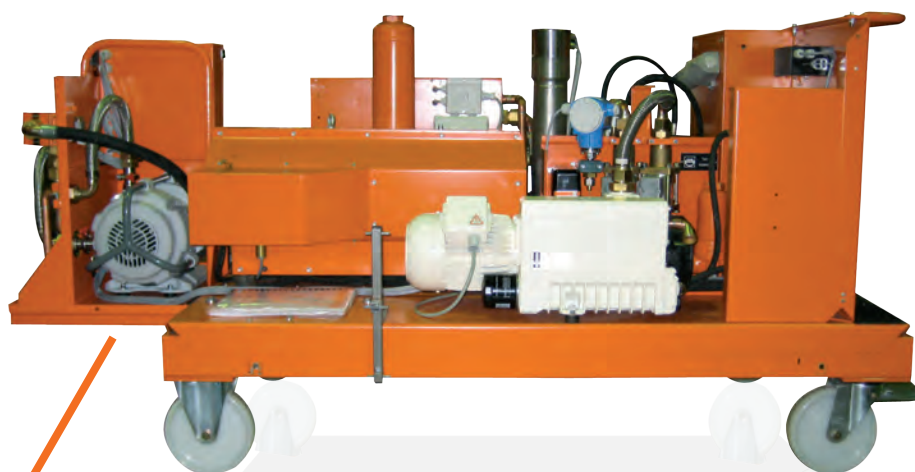
Packing for B131R41 or B131R13	<b>3-671-R001-C</b>
Packing for B131R61	<b>3-750-R001-C</b>

**Z788R..**

## Retrofit kit for suction pumps for SF<sub>6</sub> gas recovery < 1 mbar

In case a mobile unit is not your preferred choice, it is also possible to install suction pumps in an existing service cart to be able to reclaim gas in accordance with the IEC 62271-4 regulation. For more detailed information please contact us indicating the following details:

- Type
- Year of construction
- Commission number
- Working hours



Retrofit kit for the gas recovery  
(suction pump) < 1 mbar

## B007R11 / B071R11

# Filter unit

**For adsorption of moisture and gaseous or dusty decomposition products**

B007R11

**Portable pre-filter unit** ( $p_e$  25 bar)

Dry filters filled with molecular sieve and aluminium oxide  $Al_2O_3$

**For adsorption of oil-aerosols, moisture and gaseous or dusty decomposition products**

B071R11

**Portable separating filter unit** ( $p_e$  25 bar)

Separating filters filled with activated carbon granulates and aluminium oxide  $Al_2O_3$



### Technical data:

Dimensions: L 440 mm, W 170 mm, H 690 mm

Weight: 35 kg

### Standard equipment:

5 m long rubber hose DN20 with coupling tongue part DN20 on both ends

2 DILO coupling groove parts DN20 at the filter unit

Paint: orange (RAL 2004)

2 operating manuals in German, English or French

### Optional accessories at an extra charge:

2 meter long rubber hose DN20 with coupling tongue part on both ends	<b>6-1017-R020</b>
Spare filter cartridge (for dry filter B007R11)	<b>3-899-06</b>
Spare filter cartridge activated carbon / $Al_2O_3$ for B071R11	<b>3-906-06</b>
Spare filter cartridge (for particle filter)	<b>3-377-08</b>
Additional operating manual on CD-ROM	<b>6-0004-R213</b>

### Packing:

Packing for B007R11 / B071R11	<b>3-763-R001-C</b>
-------------------------------	---------------------



**3-537-R001****Mobile pre-filter unit**

**For adsorption of gaseous and dusty decomposition products in large gas compartments**

(p<sub>e</sub> 25 bar)

**Technical data:**

Dimensions: L 800 mm, W 600 mm, H 850 mm
Weight: 81 kg

**Standard equipment:**

2 dry filters (filled with molecular sieve and aluminium oxide Al <sub>2</sub> O <sub>3</sub> )
2 Particle filters
2 DILO coupling groove parts DN20
Ball valves DN20 for switching over
5 m long rubber hose DN20 with 2 DILO coupling tongue parts DN20
Paint: orange (RAL 2004)
2 operating manuals in German, English or French

**Optional accessories at an extra charge:**

2 m long rubber hose DN20 with coupling tongue part on both ends	<b>6-1017-R020</b>
Spare filter cartridge (dry filter)	<b>3-899-06</b>
Spare filter cartridge (particle filter)	<b>3-377-08</b>
Additional operating manual on CD-ROM	<b>6-0004-R213</b>

**Packing:**

Packing for 3-537-R001	<b>3-671-R001-C</b>
------------------------	---------------------



**B148R03 / R04**

## Mobile pre-filter unit

**For adsorption of gaseous and dusty decomposition products in large gas compartments**

B148R03

**Mobile pre-filter unit DN20** ( $p_e$  16 bar)

B148R04

**Mobile pre-filter unit DN40** ( $p_e$  16 bar)



### Technical data:

Dimensions: L 750 mm, W 700 mm, H 1,400 mm
Weight: 140 kg

### Standard equipment:

Dry filter 40 l (filled with 15 kg molecular sieve and 15 kg aluminium oxide $Al_2O_3$ )
Particle filter
2 DILO coupling groove parts DN20
2 DILO coupling groove parts DN40 (only for B148R04)
Paint: orange (RAL 2004)
2 operating manuals in German, English or French

### Optional accessories at an extra charge:

2 m long rubber hose DN20 with coupling tongue part on both ends	<b>6-1017-R020</b>
5 m long wire-braided hose DN40 with coupling tongue part DN40 on one end and coupling tongue part DN20 on the other end	<b>6-1080-R050</b>
Spare filter cartridge (dry filter)	<b>K077-03</b>
Spare filter cartridge (particle filter)	<b>3-377-08</b>
Additional operating manual on CD-ROM	<b>6-0004-R213</b>

### Packing:

Packing for B148R03 / B148R04	<b>3-671-R104-C</b>
-------------------------------	---------------------

### Note:

Other versions are available on request.

**3-429-R011 / R012****SF<sub>6</sub> Cylinder heater blanket****For heating SF<sub>6</sub> gas bottles**

3-429-R011

**SF<sub>6</sub> Cylinder heater blanket 220 - 240 V 1~ 50 / 60 Hz**

3-429-R012

**SF<sub>6</sub> Cylinder heater blanket 110 - 127 V 1~ 50 / 60 Hz**

When removing large quantities of SF<sub>6</sub> gas the gas might be frozen. No problem, we offer the perfect solution.

A thermostatically controlled heater blanket heats the lower part of the gas bottle to prevent the SF<sub>6</sub> gas from freezing. An integrated thermostat prevents the gas bottle from being overheated.

The handling of the heater blanket is easy: it is wrapped around the SF<sub>6</sub> bottle and secured by means of a Velcro strap. For quick gas removal from the bottle we recommend the use of two heater blankets on top of each other.

**Technical data:**

Applicable for cylinder diameter: 200 - 240 mm
Height: 255 mm
Heater performance: 500 W
Operating voltage: 220 - 240 V 1~ / 50 - 60 Hz, 110 - 127 V 1~ / 50 - 60 Hz

**Standard equipment:**

Connecting line: 1 m
2 operating manuals in 3 languages (German / English / French)

**Optional accessories at an extra charge:**

Additional operating manual on CD-ROM	<b>6-0004-R213</b>
---------------------------------------	--------------------

**Packing:**

Packing for 3-429-R... (cardboard box)	<b>3-948-R002</b>
--	-------------------

**3-558-R001 / R002**

## Precision gauge

**For precise pressure control in gas compartments**

3-558-R001

**Precision gauge with hose**

Indication range: 0 - 10 bar

3-558-R002

**Precision gauge with hose**

Indication range: 0 - 1,000 kPa

The precision gauge allows the precise control of the pressure in gas compartments. It is a very useful equipment for the operator which can be transported comfortably.



### Technical data:

Case dimensions: L 390 mm, W 310 mm, H 150 mm

### Standard equipment:

Precision gauge NG 160 / class 0.6

700 mm long wire-braided hose DN8

Handy transport case

2 operating manuals in 3 languages (German / English / French)

### Optional accessories at an extra charge:

Coupling tongue part DN8	<b>VK/F-02/8 P</b>
Coupling tongue part DN20 with transition piece to DN8	<b>6-1003-R001</b>
Plug-in coupling tongue part DN7 with transition piece	<b>6-1001-R001</b>
Plug-in coupling tongue part DN12 with transition piece to DN8	<b>6-1002-R001</b>
Additional operating manual on CD-ROM	<b>6-0004-R213</b>

### Packing:

Packing for 3-558-R001 / 3-558-R002

**3-775-R013-C**

### Note:

The corresponding couplings have to be ordered separately.

**3-558-R010**

# Digital precision gauge

**For pressure control in gas compartments**

Indication range -1 to 10 bar

Indication in bar, kPa, psi (reversible) / class 0.1

This is the suitable equipment when precise pressure indication is required. The gauge is equipped with a coupling and hose and can be connected to the gas compartment directly.

**Technical data:**

Case dimensions: L 390 mm, W 310 mm, H 150 mm

Weight: 3.5 kg

**Standard equipment:**

1 m long teflon hose

DIL0 coupling DN20

Handy transport case

2 operating manuals in 3 languages (German / English / French)

**Optional accessories at an extra charge:**

5 point certificate, 11 point certificate or a DKD certificate are available as option

Coupling tongue part DN8

**VK/F-02/8 P**

Plug-in coupling tongue part DN7 with transition piece

**6-1001-R001**

Plug-in coupling tongue part DN12 with transition piece to DN8

**6-1002-R001**

Additional operating manual on CD-ROM

**6-0004-R213****Packing:**

Packing for 3-558-R010

**3-775-R012-C**

**K040R01**

## Gauge Tee piece

**For pressure control of SF<sub>6</sub> gas**

Indication range: -1 to 15 bar

This gauge is provided as connection between switchgear and service cart, particularly as completion for the Piccolo Series. As the gauge is equipped with two connecting couplings on both ends it can be connected easily.



### Technical data:

Dimensions: L 140 mm, W 60 mm, H 182 mm

### Standard equipment:

DILO coupling tongue part DN20

DILO coupling groove part DN20

Gauge NG 100

### Note:

Other pressure ranges and nominal lengths are available on request.

**B178R01**

## DensiControl DA

### For automatic testing of switching points in density monitors

Density monitors are important components in gas monitoring. As safety equipment in switchgear they must function properly. The DensiControl DA allows quick verification of triggering of density monitor switching points by the given parameters such as pressure or temperature.

This device allows precise, quick and easy verification of the switching points. The density monitor type to be checked is selected in the data base and is then installed on the device with a quick clamping mechanism. After starting the measurement the pressure is automatically increased to filling pressure, the switching points are activated and recorded. The switching points can be stored in the system with serial number and temperature indication allowing a data file to be produced for documentation.



- Automatic test process
- Simple installation and removal of the density monitors by quick clamps
- Easy handling and menu navigation via colour touch panel (5.7")
- Storage of 50 density monitor types with their corresponding switching points
- Storage of up to 200 measuring results
- Data transmission to USB stick and data output as a test report
- Indicating pressure units can be selected
- Adjustable user languages: DE, GB and FR
- Trolley for comfortable transportation

B178R01

## DensiControl DA

### Technical data:

Dimensions: L 406 mm, B 538 mm, H 269 mm
Weight: 17 kg
Operating temperature: 0 °C to +45 °C
Operating voltage: 100 - 240 V / 50 - 60 Hz
Mains fuse: 2 x 3.15 A/T (time delay)
Number of density monitors to be stored: max. 50
Number of measuring values to be stored: max. 200
Interface: USB
Automatic measuring process
Pressure indication in bar $p_a$ or $p_e$ , psi, kPa, MPa
Accuracy of the pressure sensor (0 - 50 °C): $\leq 0.2$ % FS

### Standard equipment:

Transport case
Basic device with test vessel
5-measuring point certificate for pressure sensor
USB stick with file for evaluating and reading out the measuring data
1 operating manual (multilingual) on CD-ROM

### Optional accessories at an extra charge:

Different connecting sets are available on request	
Additional operating manual on CD-ROM	6-0004-R213

### Packing:

Packing for B178R01	3-775-R003-C
---------------------	--------------



**Z619R01****Digital vacuum gauge****For vacuum control in gas compartments**

Battery-operated (2 x 9 V)

Indication range: 0 - 400 mbar / class 0.1

After having evacuated the air or after the recovery of SF<sub>6</sub> gas the device allows precise determination of the vacuum in gas compartments. The device is protected against overpressure up to p<sub>0</sub> 9 bar.

**Technical data:**

Case dimensions: W 360 mm, H 290 mm, D 165 mm

Weight: 5.0 kg

**Standard equipment:**

DILLO coupling tongue part DN 20

DILLO coupling tongue part DN 8

Elbow and intermediate piece DN 8

Handy transport case

2 operating manuals in 3 languages (German / English / French)\_

**Optional accessories at an extra charge:**

Additional operating manual on CD-ROM

**6-0004-R213****Packing:**

Packing for Z619R01

**3-775-R026-C**

**Z340R21**

# Adapter kit

**For connection to switchgear**

Adapters in a portable plastic case for all application ranges including all gas compartment connections for SF<sub>6</sub> switchgear used all over the world such as DN6, DN7, DN8, DN12 and DN20. Furthermore, this kit includes self-closing and open transition pieces in different versions.



## Technical data:

Case dimensions: W 500 mm, H 420 mm, D 180 mm

Weight: 8.3 kg

## Standard equipment:

ASEA adapter - VK/A-02/20	6-1033-R001
Transition piece DN20 / DN8	6-1092-R007
Plug-in coupling tongue part DN12	6-1002-R001
Transition piece DN20 / DN8	3-251-R001 P
Transition piece DN8 / DN20	3-240-R001 P
Plug-in coupling tongue part DN7	6-1001-R001
Coupling tongue part DN12 / PN10	3-888-R001 T
3-408-R001 to VK/A-02/8	6-1240-R004
Air control valve with VK/A-02/8	6-1155-R001
Siemens adapter	SK-279-R003 P
Coupling tongue part DN20 to coupling tongue part DN8	6-1206-R001

## Packing:

Packing for Z340R21	3-775-R013-C
---------------------	--------------

**Z415R04 / R03**

## Gas tight cutting device

**For recovery of SF<sub>6</sub> gas from firmly welded gas compartments**

Z415R04

**Gas tight cutting device**

Z415R03

**Gas tight cutting device with stud welding machine**

This cutting device allows reliable recovery of SF<sub>6</sub> gas in case gas compartments - sealed for life - are to be shut down and the circuit breaker has to be disposed of in an environmentally acceptable manner. Thus SF<sub>6</sub> gas is prevented from escaping into the atmosphere.

In practice, the recovery device is to be mounted on the housing of the circuit breaker to be disposed of and is drilled then. After that it is possible to recover the SF<sub>6</sub> gas contained in the circuit breaker by means of an appropriate service cart. The recovery device is equipped with a DN20 coupling so that the service cart can be connected easily. The large cross-section enables quick recovery of the SF<sub>6</sub> gas.

The recovery device is a useful tool particularly for companies specialized in the disposal of GIS plants.



**Z415R04**

- Self-closing DILO coupling DN20
- Operation of the hard metal cutter with accumulator or hand drill
- Storage in a robust case
- Other versions are available on request

Z415R04 / R03

## Gas tight cutting device

### Technical data:

Dimensions of Z415R04: length: 360 mm, width: 295 mm, height: 165 mm
Dimensions of Z415R03: length: 640 mm, width: 460 mm, height: 210 mm
Weight of Z415R04: 4.8 kg
Weight of Z415R03: 24 kg
Operating voltage of the stud welding machine: 115 / 230 V / 50 - 60 Hz

### Standard equipment:

Recovery device
Stencil
Hard metal cutter Ø 16 mm
Screw driver
Stud welding machine (only for Z415R03)
2 operating manuals in German or English

### Example for use



Fixation of welded stud before assembly on surface



Gas recovery device mounted on the surface – ready for drilling

### Note:

The gas tight cutting device is supplied without connecting hose.  
The connecting hose has to be ordered separately.

### Optional accessories at an extra charge:

5 m long rubber hose DN20 with coupling tongue part DN20 on both ends	6-1017-R050
---	-------------

### Packing:

Packing for Z415R03	3-775-R025-C
---------------------	--------------

**3-442-R001**

# Working protection kit

**For decomposed SF<sub>6</sub> gas (with neutralization)**

After arc quenching in the circuit breaker solid or gaseous decomposition products are generated the operators have to be protected from effectively. This kit offers effective protection of the staff against toxic decomposition products.

**Technical data:**

Dimensions aluminium trolley: L 655 mm, W 545 mm, H 380 mm
Gross weight: 14.6 kg

**Standard equipment:**

Piece	Designation	Order No.
1	Aluminium trolley	5001686
2	Disposable overall	5001671*
5 pairs	Disposable overshoes	5001672*
1	Breathing half mask	5001692*
1	Protective goggles	5001693*
2 kits	Gas and particle filter for breathing half mask	1002847*
1	Valves (breathe in and out) for half breathing mask	1002848*
2 pairs	Safety gloves	5001673*
5 pairs	Gloves made of cotton stockinet	9000017*
1	Plastic barrel	5001669*
1 piece	Dustpan with brush	9000062*
5 pieces	Refuse sacks 120 liters	9000063*
2 rolls	Sucking and wiping cloths	9000065*
1 kg	Sodium carbonate	5001670*
1	Vessel for solvent	5001070*
10	Spoon	9000066*
1 pack	Indicator paper	5003235*
1	Safety helmet EN 397, red	9000487
1	1 operating manual (multilingual) on CD-ROM	

\* spare material

**Optional accessories at an extra charge:**

Additional operating manual on CD-ROM	6-0004-R213
---------------------------------------	-------------

**Packing:**

Packing for 3-442-R001	3-748-R015-C
------------------------	--------------

3-442-22 / -25

# Dry vacuum cleaner

For recovery of solid decomposition products from the circuit breaker

3-442-22

**Dry vacuum cleaner (230 V / 50 - 60 Hz)**

3-442-25

**Dry vacuum cleaner (120 V / 60 Hz)**

For removal of solid decomposition products in switchgear dry vacuum cleaners with dust class H or higher are admissible. Even finest dust particles can be removed with this dry vacuum cleaner to exclude any risk to the operating personnel.



- Dust class H
- Aluminium trolley for comfortable transportation
- Easy filter exchange

## Technical data:

Dry vacuum cleaner (aluminium trolley included): L 545 mm, W 480 mm, H 775 mm
Weight with aluminium trolley: 23 kg

## Standard equipment:

1 operating manual (multilingual) on CD-ROM
---

## Optional accessories at an extra charge:

1 piece spare inlet filter for dry vacuum cleaner (dust class H)	5001682
1 spare hose, 5 m long with connecting sleeve	5001680
Additional operating manual on CD-ROM	6-0004-R213

## Packing:

Packing for 3-442-22 / 3-442-25	3-748-R016-C
---------------------------------	--------------



**B174R..**

# Hose reel with spring balancer

**Stationary unit for wall assembly**

B174R10

**Hose reel with spring balancer**

with 10 m long rubber hose DN20 and coupling tongue part DN20

B174R15

**Hose reel with spring balancer**

with 15 m long rubber hose DN20 and coupling tongue part DN20

B174R01

**Hose reel with spring balancer**

without hose, for a maximum of 15 m hose DN20 with surface coating (GS0120L.....)

The useful tool has been specially adapted to customer requirements in GIS production areas to keep hoses tidy. Therefore these practical accessories allow quick hose installation in GIS production to have everything neat and clean.

The hose reel can easily be mounted and enables convenient reeling and unreeling of the desired hose length. Its optional holder can be swivelled in both directions. The integrated gastight rotary feedthrough ensures that no SF<sub>6</sub> gas escapes into the atmosphere.



Hinge swivelling in both directions  
B174R90 (accessories)

- Stable steel frame
- Ready for wall assembly
- Equipped with DN20 connection
- Pressure range -1 up to 60 bar
- Gastight rotary feedthrough
- Comfortable reeling and unreeling of the desired hose length
- Adjustable reel up force
- Hinge swivelling in both directions (available as option)
- Different hose lengths are available



B174R..

## Hose reel with spring balance

### Technical data:

Dimensions: W 435 mm, H 500 mm, D 470 mm
Gewicht: 31 kg

### Optional accessories at an extra charge:

Swivelling hinge for wall assembly	<b>B174R90</b>
1 m long angled rubber hose DN20 (from gas handling plant to hose reel)	<b>GS0320L01000</b>
1.5 m long angled rubber hose DN20 (from gas handling plant to hose reel)	<b>GS0320L01500</b>
1 m long rubber hose DN20 (from gas handling plant to hose reel)	<b>GS0120L01000</b>
1.5 m long rubber hose DN20 (from gas handling plant to hose reel)	<b>GS0120L01500</b>
DN20 quick coupling	<b>3-1121-R003</b>

### Packing:

Packing for B174R..	<b>3-1001-R001-C</b>
---------------------	----------------------

**Z446R..**

# Hose reel

**Mobile unit for hose reeling**

Z446R04

**Hose reel for three gas compartment hoses**

Z446R06

**Hose reel for six gas compartment hoses**

Z446R05

**Hose reel for eight gas compartment hoses**

The hose reel has been specially designed for optimising SF<sub>6</sub> gas handling and for keeping hoses tidy in GIS production. The hose distributor allows to connect several gas compartments at the same time which can be treated by means of an SF<sub>6</sub> maintenance device.

As the unit is equipped with four steerable rollers it can easily be transported to the desired location. The hose reel is of robust construction and can store up to eight hoses.



- Stable steel frame
- Steerable rollers allow easy transport
- With 3, 6 or 8 DN20 hoses available as option
- DN40 connecting hose to gas handling plant
- Different hose lengths are available

Z446R..

## Hose reel

### Technical data:

Dimensions: L 700 mm, W 700 mm, H 1,100 mm
Weight: 100 kg

### Standard equipment:

Reel with four steerable rollers
Optionally available with hoses

### Optional accessories at an extra charge:

5 m long wire braided hose DN40 (from gas handling plant to hose reel)	SM0140L05000
10 m long wire braided hose DN40 (from gas handling plant to hose reel)	SM0140L10000
Coupling tongue part DN40 (for DN40 hose)	VK/F-01/40 E
2 m long rubber hose DN20 (from hose reel to gas compartment)	GS0120L02000
3 m long rubber hose DN20 (from hose reel to gas compartment)	GS0120L03000
4 m long rubber hose DN20 (from hose reel to gas compartment)	GS0120L04000
5 m long rubber hose DN20 (from hose reel to gas compartment)	GS0120L05000
6 m long rubber hose DN20 (from hose reel to gas compartment)	GS0120L06000
2 m long wire braided hose DN20 (from hose reel to gas compartment)	SM0120L02000
3 m long wire braided hose DN20 (from hose reel to gas compartment)	SM0120L03000
4 m long wire braided hose DN20 (from hose reel to gas compartment)	SM0120L04000
5 m long wire braided hose DN20 (from hose reel to gas compartment)	SM0120L05000
6 m long wire braided hose DN20 (from hose reel to gas compartment)	SM0120L06000
Coupling tongue part DN20 (for DN20 hose)	VK/F-02/20 P
DN20 quick coupling	3-1121-R003

### Packing:

Packing for Z446R..	3-1001-R005-C
---------------------	---------------

**3-1121-R003**

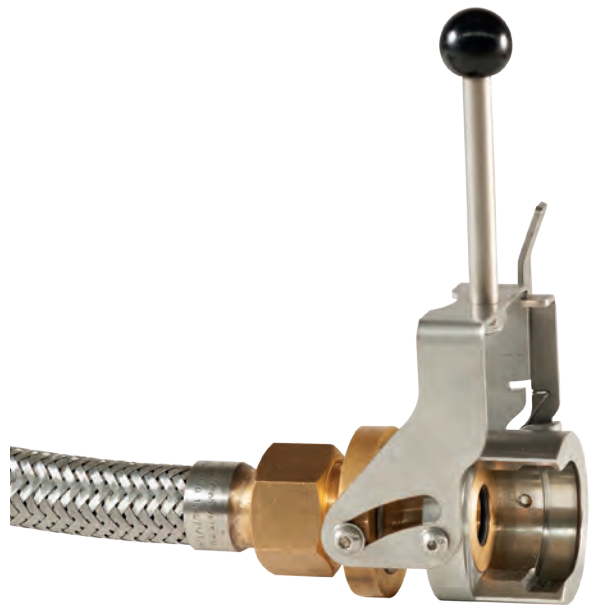
## DN20 Quick coupling

### For easy coupling and uncoupling of hoses

The quick coupling is very useful in all fields of application where hoses have to be frequently loosened and reconnected e. g. during final tests of completely mounted GIS fields. Thanks to the clamp lock the DN20 hoses can easily be connected without any loss of SF<sub>6</sub> gas. Thus the handling times in GIS production are shortened and productivity is increased considerably.



closed coupling



open coupling

**Important note:**

The quick coupling is only compatible with DILO coupling groove parts of version 2 (additional "V2" stamp on the flange or wrench size).

- Clamp lock for quick coupling and uncoupling
- Suitable for hoses DN20
- Pressure range up to 10 bar
- No SF<sub>6</sub> gas losses
- Robust version

Please see our product video

