

B160R92

Micro Series

For the handling of very small gas quantities

B160R92

Small service unit

This unit of the Micro series has been constructed in such a way that all functions can be carried out fully automated:

- Recovery and storage of SF₆ in an internal or external storage vessel with automatic switch-off when reaching the adjustable final vacuum.
- Automatic purification of the SF₆ gas during the recovery and filling process.
- Filling via pressure reducer by overflowing or by means of the compressor (automatic switchover) from an internal or external storage vessel with automatic switch-off when reaching the adjustable filling pressure.
- Evacuation of air with automatic switch-off when reaching the adjustable final vacuum.

The device has been specially designed for very small gas quantities and is ideally suited for applications, such as SF₆ gas handling on medical devices or electron microscopes.



- Device for gaseous storage of SF₆ gas
- Final vacuum 3 mbar
- Internal storage tank (capacity: 2 l)
- Menu navigation via the 5.7" coloured touch screen
- Installed in a transport case (trolley)

B160R92

Small service unit

Technical data:

Dimensions: L 625 mm, W 500 mm, H 297 mm	
Weight: 30 kg	
Operating voltage: 220 - 240 V / 50 Hz alternating current	
Additional price for electrical special voltage	on request

Standard equipment:

B100R20 oilfree compressor (0.9 m ³ /h, final pressure p _e 9 bar)
Small diaphragm compressor (1.2 m ³ /h, final vacuum 3 mbar)
Menu navigation via 5.7" coloured touch screen
Internal 2 l storage tank, max. p _e 9 bar (18 NI or 0.1 kg SF ₆)
Particle filter
Filling pressure reducer
Self-closing input and output miniature coupling
DILLO coupling DN8 with hose connection
2 m long connecting hose with self-closing miniature coupling
Transport case (trolley)
2 operating manuals in German, English or French

Optional accessories at an extra charge:

2 m long storage connecting hose with self-closing miniature couplings	6-1116-R020
DILLO coupling DN20 with hose connection	6-1161-R012
SF ₆ bottle connection with W 21.8 x 1/14" thread	6-1161-R007
American SF ₆ bottle connection with 0.96" Whitworth left thread	6-1161-R008
English SF ₆ bottle connection with G 5/8 thread	6-1161-R009
1" DIN 477 no. 8 bottle connection for reuse gas bottles	6-1161-R010
Storage bottle (volume: 2 l)	K079R05
Storage bottle (volume: 10 l)	K079R01
Storage bottle (volume: 20 l)	K079R02
Additional operating manuals on CD-ROM	6-0004-R213

Spare part kit:

Exchange compressor for B100R20	B100R20-61
---------------------------------	------------

Packing:

Packing for B160R92	3-775-R024-C
Packing for storage bottle (volume: 2 l)	3-775-R103-C
Packing for storage bottle (volume: 10 l or 20 l)	3-763-R007-C

The handy Mini Series consists of the following individual components which can be assembled as complete unit.

For adsorption of moisture, solid and gaseous decomposition products

B077R11

Pre filter unit (pe 10 bar)



Technical data:

Dimensions: L 180 mm, W 105 mm, H 360 mm
Weight: 4.0 kg

Standard equipment:

Dry filter
Particle filter
DILO coupling DN8
2 operating manuals in German, English or French

Optional accessories at an extra charge:

2 m long rubber hose DN8, with DILO coupling tongue part DN8 on both ends	6-1042-R020
Spare filter cartridge for dry filter	B077-05
Spare filter cartridge for particle filter	B077-06
Additional operating manual on CD-ROM	6-0004-R213

Packing:

Packing for B077R11	3-948-R005
---------------------	-------------------

Mini Series

For evacuation of air

B078R06

Portable vacuum pump unit (10 m³/h, < 1 mbar)



Technical data:

Dimensions: L 420 mm, W 200 mm, H 320 mm
Weight: 20 kg
Operating voltage: 220 - 240 V / 50 - 60 Hz alternating current

Standard equipment:

10 m ³ /h vacuum pump with exhaust filter, final vacuum < 1 mbar
Vacuum gauge (-1 to 0 bar)
Ball valve DN8
3 m long rubber hose DN8 with DILO coupling tongue part DN8
2 operating manuals in German, English or French

Optional equipment (mounted) at an extra charge:

Additional price for electrical special voltage 110 - 127 V / 50 - 60 Hz	6-0005-R063
--	-------------

Optional accessories at an extra charge:

SF ₆ gas refilling device	3-393-R001
Coupling adapters DN8 for evacuation of hoses	6-1059-R012
Additional operating manual on CD-ROM	6-0004-R213
Aluminium transport case	3-781-R011

Spare parts kit:

Maintenance package for vacuum pump, dry and particle filter included	6-1048-R101
---	-------------

Packing:

Packing for B078R06	3-748-R003-C
---------------------	--------------

For recovery of SF₆ gas down to 5 mbar in conjunction with the compressor

B093R30

Vacuum compressor unit (3.3 m³/h)

Operating voltage: 220 - 240 V / 50 / 60 Hz alternating current

B093R30S15

Vacuum compressor unit (3.3 m³/h)

Operating voltage: 110 - 127 V / 60 Hz alternating current



Technical data:

Dimensions: L 480 mm, W 325 mm, H 280 mm

Weight: 26 kg

Standard equipment:

3.3 m³/h vacuum compressor for SF₆, final vacuum during gas recovery < 5 mbar

Solenoid valve

Pressure switch

Gauge (-1 to +1.5 bar)

DILO couplings DN8

Electric control

Paint: orange (RAL 2004)

2 operating manuals in German, English or French

Optional accessories at an extra charge:

2 m long rubber hose DN8, with DILO coupling tongue part DN8 on both ends

6-1042-R020

Additional operating manual on CD-ROM

6-0004-R213

Aluminium transport case

3-781-R017

Spare parts kit:

Spare parts kit for vacuum compressor

6-1055-R030

Packing:

Packing for B093R30 / B093R30S15

3-748-R003-C

Mini Series

For liquid SF₆ storage

B095R12

Compressor unit

Operating voltage: 220 - 240 V / 50 - 60 Hz alternating current

B095R12S15

Compressor unit

Operating voltage: 110 - 127 V / 50 - 60 Hz alternating current



Technical data:

Dimensions: L 455 mm, W 310 mm, H 370 mm

Weight: 28 kg

Standard equipment:

Oil-free compressor (1.6 m³/h [at 50 Hz], 50 bar; 1.9 m³/h [at 60 Hz], 50 bar)

Particle filter

Gauge

Filling pressure reducer

DILO couplings DN8

Electric control

Paint: orange (RAL 2004)

2 operating manuals in German, English or French

Optional accessories at an extra charge:

Storage connection with 5 meter long rubber hose DN8, DILO coupling DN8, ball valve DN8 and five different SF ₆ bottle connections	6-1041-R050
2 m long rubber hose DN8 with DILO coupling tongue part DN8 on both ends	6-1042-R020
5 m long rubber hose DN8 with DILO coupling tongue part DN8 on both ends	6-1042-R050
Additional operating manual on CD-ROM	6-0004-R213
Aluminium transport case for B095R12	3-781-R021
Plastic case for B077R11 and accessories	3-781-R022

Spare parts kit:

Spare parts kit for compressor	6-1081-R010
--------------------------------	--------------------

Packing:

Packing for B095R12 / B095R12S15	3-748-R009-C
----------------------------------	---------------------

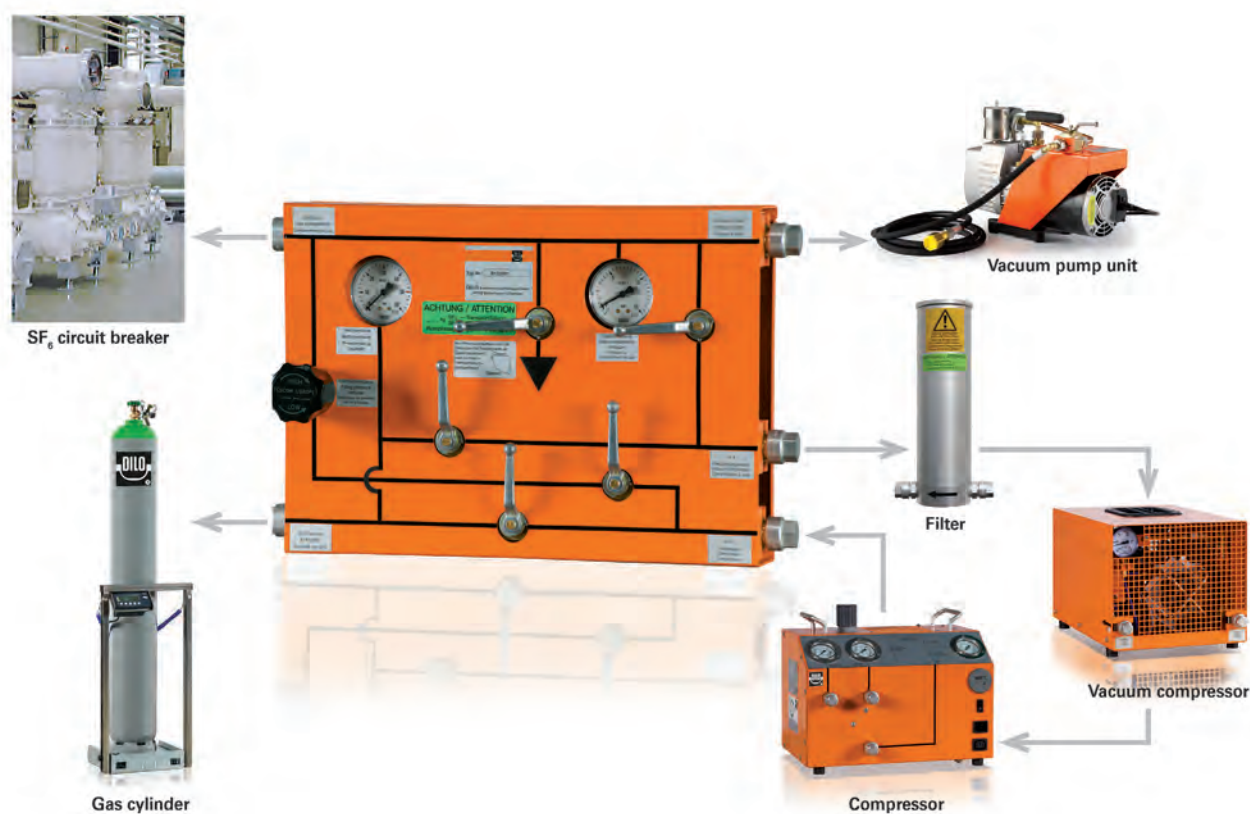
For easy handling of individual components

B132R01

Operating panel for Mini Series

The components of the Mini Series such as vacuum compressor unit, compressor unit and vacuum pump unit can be connected to the operating panel with hoses. Furthermore, an SF₆ bottle and the gas compartment can be connected as well.

Thus, a safe handling is guaranteed. The ball valves can be adjusted in such a way as to carry out the evacuation, filling and gas recovery function without disconnecting the hoses.



- Transport case to prevent the device from damage (available as option)
- Different hose lengths (available as option)

Mini Series

B132R01

Operating panel for Mini Series

Technical data:

Dimensions: L 510 mm, W 320 mm, H 140 mm
Weight: 13 kg

Technical data aluminium transport case:

Dimensions: L 600 mm, W 400 mm, H 180 mm
Weight: 6.5 kg

Standard equipment:

Gauge
Ball valves DN8
Filling pressure reducer
DILO couplings DN8
2 operating manuals in German, English or French

Optional accessories at an extra charge:

Storage connection with 5 m long rubber hose DN8, DILO coupling DN8, ball valve DN8 and five different SF ₆ bottle connections	6-1041-R050
2 m long rubber hose DN8 with DILO coupling tongue part DN8 on both ends	6-1042-R020
5 m long rubber hose DN8 with DILO coupling tongue part DN8 on both ends	6-1042-R050
Additional operating manual on CD-ROM	6-0004-R213
Aluminium transport case	3-781-R008

Packing:

Packing for B132R01	3-775-R014-C
---------------------	---------------------

Packing for all components of the Mini Series: B077R11 / B078R06 / B093R30 / B095R12 / B132R01:

Packing if all components are packed together	3-748-R010-C
---	---------------------

For efficient SF₆ gas handling on small gas compartments

B143R11

Small service cart

The compact and mobile unit meets all requirements for efficient gas handling in the medium voltage range. Compact design and ergonomic aspects have been a guideline for its construction. Compared with the large devices - all necessary functions are integrated including gas purification via dry filter and particle filters and gas storage in liquid form.

The gas is recovered to a final vacuum of < 5 mbar and thus outranges the IEC directives by far. The integrated dry running compressors prevent the SF₆ gas from being contaminated by oil. All values for the gas recovery, evacuation and filling process are displayed on the panel.



B143R11 model with
TÜV SÜD certified
performance data

- Device for liquid storage of SF₆ gas
- SF₆ gas recovery down to < 5 mbar
- Semi-automatic control and 2.8" operating panel
- Digital weighing scales for SF₆ bottles
- Residual gas recovery down to 5 mbar during filter change
- Reduction to transport pressure as integrated special function

Mini Series

B143R11

Small service cart

Technical data:

Dimensions: L 770 mm, W 760 mm, H 1,420 mm
Weight: 215 kg

Standard equipment:

Oil-free compressor (1.6 m³/h [at 50 Hz], 50 bar; 1.9 m³/h [at 60 Hz], 50 bar)
Vacuum compressor for SF ₆ gas recovery (3.3 m³/h, final vacuum < 5mbar)
Vacuum pump for air (14 m³/h, 2-stage, final vacuum < 1 mbar)
Dry filter
Particle filter
Pressure reducer
20 l storage bottle
Digital weighing scales for SF ₆ bottles (with adjustable switching point), 220 - 240 V / 50 - 60 Hz
Indication in bar / mbar, psi / torr (reversible on the panel)
5 m long rubber hose with coupling tongue parts DN8 on both ends
SF ₆ bottle connection with W 21.8 x 1/14" thread
3.0 m long connecting cable
Paint: orange (RAL 2004)
2 operating manuals in German or English

Operating voltage:

220 - 240 V / 50 - 60 Hz alternating current
--

Optional accessories at an extra charge:

Second storage bottle (volume: 20 l)	K079R02
American SF ₆ bottle connection with 0.96" Whitworth left-hand thread	3-334-R002 P
English SF ₆ bottle connection with G 5/8 thread	3-245-R004 P
SF ₆ bottle connection with G 5/8 thread	3-643-R002 P
Additional operating manual on CD-ROM	6-0004-R213

Spare parts kits:

Maintenance package for vacuum pump, dry and particle filter included	6-1048-R201
Spare parts kit for compressor	6-1081-R010
Spare parts kit for vacuum compressor	6-1055-R030

Packing:

Packing for B143R11	3-262-R004-C
---------------------	---------------------

L030R01

Piccolo series

For SF₆ gas handling on switchgear with reduced filling quantities

L030R01

SF₆ gas service cart

The L030 model of the Piccolo series has been specially designed for modern switchgear with small gas compartments. Due to its compact construction this device fits conveniently onto a euro pallet for transport and is easily manoeuvrable even in the very narrow passage ways of gas insulated switchgear.

The L030 maintenance device is equipped with a compact but high capacity compressor which enables SF₆ reclaiming up to < 5 mbar – a value outperforming current IEC regulations by far. A smart device for “smart grids”.



L030R01 model with
TÜV SÜD certified
performance data



Weight indication for SF₆ bottle scale /
3.6" operating panel



Optional iPad remote control

- Device for liquid storage of SF₆ gas
- SF₆ gas recovery down to < 5 mbar
- Semi-automatic control and 3.6" operating panel
- Optional iPad remote control
- Reversing switch for direction of rotation
- Digital weighing scales for SF₆ bottles
- Residual gas recovery down to 1 mbar during filter change
- Reduction to transport pressure as integrated special function

L030R01

SF₆ gas service cart

Technical Data:

Dimensions: L 1,200 mm, W 800 mm, H 1,170 mm
Weight: 300 kg

Standard equipment:

B100R40 compressor (3.2 m ³ /h, [at 50 Hz], 50 bar; 3.8 m ³ /h [at 60 Hz], 50 bar)
Vacuum compressor for SF ₆ recovery (4.8 m ³ /h, final vacuum < 5 mbar)
Vacuum pump for evacuation of air (16 m ³ /h, final vacuum < 1 mbar)
Dry filter
Particle filter
Indication units in bar / mbar, kPa or psi / torr to be selected on the operating panel
Fork lift provisions
Digital weighing scales for SF ₆ bottles
3 m long storage connecting hose DN8 with coupling tongue part DN20
Frame with crane eyelets
Tool box
Fixing and steerable rollers
Different wrenches
Paint: orange (RAL 2004)
2 operating manuals in German, English or French

Operating voltage:

208 - 240 V / 60 Hz 3-phase current	6-030SP-R011
380 - 460 V / 50 Hz or 380 - 480 V / 60 Hz 3-phase current	6-030SP-R012

Optional equipment (mounted) at an extra charge:

Additional price for electrical special voltage 200 V / 50 - 60 Hz 3-phase current	6-030SP-R017
Additional price for electrical special voltage 600 V / 60 Hz 3-phase current	6-030SP-R019
iPad remote control, WLAN connection	6-030BP-R001
Dew point control for dry filter	6-030TF-R011
Tarpaulin	6-030KA-R001

L030R01**Piccolo Series**

L030R01

SF₆ gas service cart**Optional accessories at an extra charge:**

5 m long rubber hose DN20 with coupling tongue part DN20 on both ends	6-1017-R050
10 m long rubber hose DN20 with coupling tongue part DN20 on both ends	6-1017-R100
5 m long wire braided hose DN20 with coupling tongue part DN20 on both ends	6-1024-R050
10 m long wire braided hose DN20 with coupling tongue part DN20 on both ends	6-1024-R100
Additional operating manual on CD-ROM	6-0004-R213

Spare parts kits:

Maintenance package for vacuum pump, dry and particle filter included	6-1048-R301
Spare parts kit for compressor	6-1081-R020
Spare parts kit for vacuum compressor	6-1189-R001

Packing:

Packing for L030R01	3-751-R013-C
---------------------	---------------------

B057R.. / B058R..

Compact Series

For easy maintenance on high voltage switchgear

B057R.. / B058R..

SF₆ gas service carts

This robust series comprises several versions allowing gaseous and liquid SF₆ storage. SF₆ gas can be recovered to a final vacuum of < 5 mbar or 1 mbar and exceeds IEC 62271-4 regulations by far.

All devices of this type series are equipped with a semi-automatic control and are easy to operate: The functions are selected by means of a 3-way ball valve and a selector switch. The pressure units (bar/mbar, kPa or psi/torr) can be chosen on the operating panel.

The Compact series is the perfect choice in case a robust and user-friendly device is required for maintenance works on high voltage switchgear.



B058R03



B057R17

- Devices for storage in gaseous or liquid form
- SF₆ gas recovery down to < 5 mbar or 1 mbar
- Semi-automatic control and 3.6" operating panel
- Residual gas recovery down to 5 or 1 mbar during filter change
- Reduction to transport pressure as integrated special function
- All versions are available with tanks which can be assembled under the device with CE marking also available with SQL and ASME approval

For liquid storage

B057R03

SF₆ gas service cart



B057R03 model with
TÜV SÜD certified
performance data

Technical data:

Dimensions: L 1,850 mm, W 950 mm, H 1,220 mm
Weight: 580 kg

Standard equipment:

TM 5.0 B oilfree compressor (5.7 m ³ /h [at 50 Hz], 50 bar; 6.8 m ³ /h [at 60 Hz], 50 bar)
Vacuum compressor for recovery of SF ₆ (4.8 m ³ /h, final vacuum < 5 mbar)
Vacuum pump for evacuation of air (40 m ³ /h, final vacuum < 1 mbar)
Evaporator
Dry filter
Particle filter
Indication units in bar / mbar, kPa or psi / torr to be selected on the operating panel
Fork lift provisions
Digital weighing scales for SF ₆ bottles
5 m long storage connecting hose DN8 with coupling tongue part DN20
Different wrenches
Paint: orange (RAL 2004)
2 operating manuals in German, English or French

Operating voltage:

208 - 240 V / 60 Hz 3-phase current	6-057SP-R011
380 - 460 V / 50 Hz or 380 - 420 V / 60 Hz 3-phase current	6-057SP-R012

B057R.. / B058R..

Compact Series

B057R03

SF₆ gas service cart

Mounted on a pressure tank / stowage



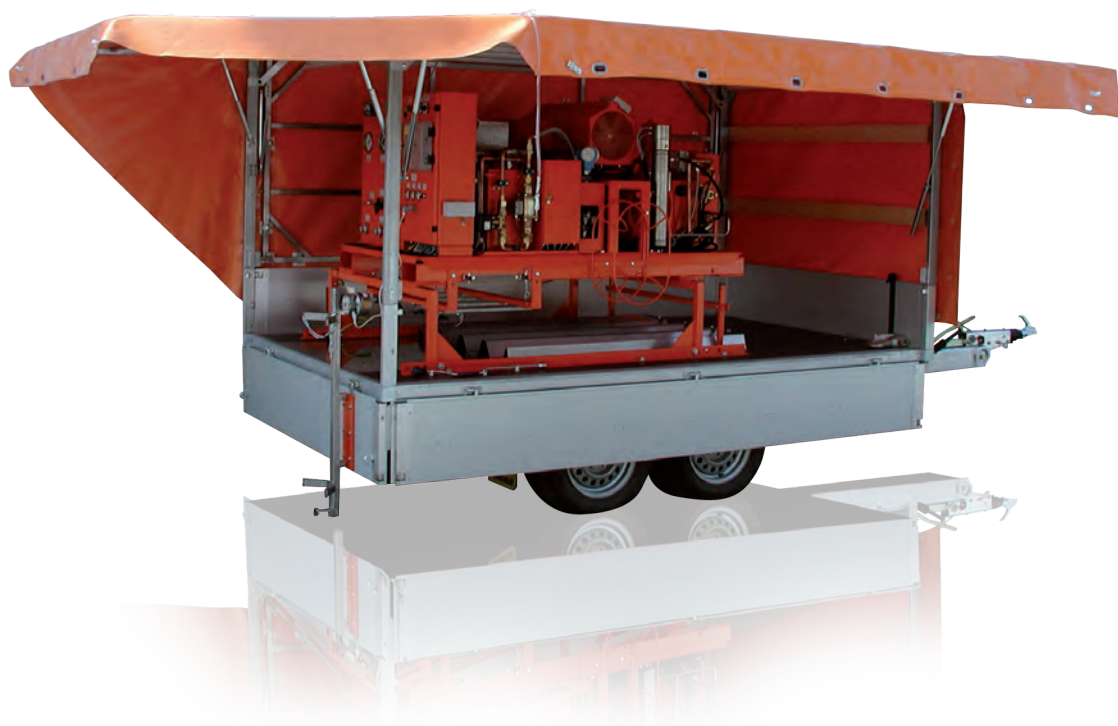
Optional equipment (mounted) at an extra charge:

	Storage capacity	Length mm	Width mm	Height mm	Net weight	Article No.
300 l / 50 bar pressure tank in accordance with EC 97/23 regulations and CE marked	280 kg	2,000	950	1,725	1,050 kg	B171R01B057
600 l / 50 bar pressure tank in accordance with EC 97/23 regulations and CE marked	580 kg	2,000	950	1,935	1,270 kg	B171R02B057
Stowage including 5 SF ₆ -bottles with electronic weight indication and chassis with solid tired wheels	5 x 40 kg	2,500	1,050	2,015	1,320 kg	B175R01B057

B057R03

SF₆ gas service cart

Can be mounted on a trailer with the following accessories:



Technical data:

Dimensions: L 4,500 mm, W 1,700 mm, H 2,280 mm

Max. admissible total weight: 2,000 kg

2 axle car trailer TÜV approved, stowage with weighing device **with** 5 SF₆-bottles, tarpaulin, side and back walls opened by pneumatic springs

B175R11B057

2 axle car trailer TÜV approved, stowage with weighing device **without** SF₆-bottles, tarpaulin, side and back walls opened by pneumatic springs

B175R10B057

B057R.. / B058R..

Compact Series

For recovery of SF₆ down to < 1 mbar with liquid storage

B057R17

SF₆ gas service cart



Technical data:

Dimensions: L 1,850 mm, W 950 mm, H 1,220 mm

Weight: 500 kg

Standard equipment:

TM 5.0 B oilfree compressor (5.7 m³/h [at 50 Hz], 50 bar; 6.8 m³/h [at 60 Hz], 50 bar)

Oilfree suction pump for recovery of SF₆ (15 m³/h, final vacuum < 1 mbar)

Vacuum pump for evacuation of air (16 m³/h, final vacuum < 1 mbar)

Dry filter

Particle filter

Indication units in bar / mbar, kPa or psi / torr to be selected on the operating panel

Fork lift provisions

Different wrenches

Paint: orange (RAL 2004)

2 operating manuals in German, English or French

Operating voltage:

208 - 240 V / 60 Hz 3-phase current

6-057SP-R011

380 - 460 V / 50 Hz or 380 - 420 V / 60 Hz 3-phase current

6-057SP-R012

B057R17

SF₆ gas service cart

Mounted on a pressure tank



When using the B057R17 device type the SF₆ gas is not taken from the storage tank in liquid form!

Optional equipment (mounted) at an extra charge:

Digital weighing scales for one SF ₆ bottle	K091R64
5 m long storage connecting hose DN8 with coupling tongue part DN20	6-1037-R050

	Storage capacity	Length mm	Width mm	Height mm	Net weight	Article No.
300 l / 50 bar pressure tank in accordance with EC 97/23 regulations and CE marked	280 kg	2.000	950	1.725	1.050 kg	B171R01XB057
600 l / 50 bar pressure tank in accordance with EC 97/23 regulations and CE marked	580 kg	2.000	950	1.935	1.270 kg	B171R02XB057

B057R.. / B058R..

Compact Series

For gaseous storage

B058R03

SF₆ gas service cart



Technical data:

Dimensions: L 1,850 mm, W 950 mm, H 1,220 mm

Weight: 550 kg

Standard equipment:

TM 2.5 B oilfree compressor (11.4 m³/h, final pressure 23 bar at a suction pressure of > p_e 3 bar or 16 bar at vacuum compressor connected in series or at a suction pressure of p_e = 1 bar)

Vacuum compressor for recovery of SF₆ (4.8 m³/h, final vacuum < 5 mbar)

Vacuum pump for evacuation of air (40 m³/h, final vacuum < 1 mbar)

Dry filter

Particle filter

Indication units in bar / mbar, kPa or psi / torr to be selected on the operating panel

Fork lift provisions

Different wrenches

Paint: orange (RAL 2004)

2 operating manuals in German, English or French

Operating voltage:

208 - 240 V / 60 Hz 3-phase current

6-057SP-R011

380 - 460 V / 50 Hz or 380 - 420 V / 60 Hz 3-phase current

6-057SP-R012

B058R03

SF₆ gas service cart

Mounted on a pressure tank



Optional equipment (mounted) at an extra charge:

	Storage capacity at 10 bar	Storage capacity at 16 bar	Storage capacity at 23 bar	Length mm	Width mm	Height mm	Net weight	Article No.
600 l / 25 bar pressure tank in accordance with EC 97/23 regulations and CE marked	42 kg	72 kg	105 kg	1,850	950	1,800	850 kg	B173R01
1,000 l / 25 bar pressure tank in accordance with EC 97/23 regulations and CE marked	70 kg	120 kg	175 kg	2,230	950	1,800	1,100 kg	B173R02

B057R.. / B058R..**Compact Series**

B057R.. / B058R..

SF₆ gas service carts**Optional equipment (mounted) at an extra charge for all service carts of the Compact series:**

Additional price for electrical special voltage 440 - 480 V / 60 Hz 3-phase current	6-057SP-R014
Additional price for electrical special voltage 200 V / 50 - 60 Hz 3-phase current	6-057SP-R017
Additional price for electrical special voltage 210 - 240 V / 50 Hz 3-phase current	6-057SP-R018
Additional price for electrical special voltage 600 V / 60 Hz 3-phase current	6-057SP-R019
Tarpaulin (not for B175R.. trailer)	6-057KA-R001
Tool box	6-057AB-R001
Shelf plate	K174R01

Optional accessories at an extra charge for all Compact service carts:

5 m long rubber hose DN20 with coupling tongue part DN20 on both ends	6-1017-R050
7 m long rubber hose DN20 with coupling tongue part DN20 on both ends	6-1017-R070
10 m long rubber hose DN20 with coupling tongue part DN20 on both ends	6-1017-R100
Additional operating manual on CD-ROM	6-0004-R213

Spare parts kits for B057R03:

Maintenance package for vacuum pump, dry and particle filter included	6-1048-R401
Spare parts kit for TM 5.0 B compressor	6-1010-R011
Spare parts kit for vacuum compressor	6-1189-R001

Spare parts kits for B057R17:

Maintenance package for vacuum pump, dry and particle filter included	6-1048-R411
Spare parts kit for TM 5.0 B compressor	6-1010-R011

Spare parts kits for B058R03:

Maintenance package for vacuum pump, dry and particle filter included	6-1048-R401
Spare parts kit for TM 2.5 B compressor	6-1007-R011
Spare parts kit for vacuum compressor	6-1189-R001

Packing for all Compact service carts:

Packing for all devices without pressure tank	3-750-R001-C
Packing for devices with 300 l, 600 l pressure tank or stowage and weighing device	3-751-R001-C
Packing for devices with 1,000 l pressure tank	3-751-R002-C
Transport pallet for B057R03 mounted on a trailer	3-688-R004-C

L057R..

Economy Series

The range for universal applications

L057R01 / R11

SF₆ gas service carts

L057 series is a real all-rounder convincing by its compact design, its user-friendly and automated gas handling. Everything is available: the practical tool box for hoses and accessories as well as the digital weighing scales integrated in the device.

The device is equipped with many special functions facilitating the maintenance of the device. In case a filter cartridge has to be exchanged it is possible to recover the SF₆ gas from the filter unit by means of a special function. Afterwards the air can be evacuated.

All functions are displayed on the 10" touch panel (version R01) or on the 3.6" panel (version R11). The operator can easily select the desired language, the required pressure and the vacuum units on the panel.

SF₆ gas handling can be quite easy.



- Devices for liquid storage of SF₆ gas
- SF₆ gas recovery down to < 1 mbar
- Automatic control and 10" touch panel (version R01)
- Reversing switch for direction of rotation
- Digital weighing scales for SF₆ bottles
- Residual gas recovery down to 1 mbar during filter change
- Reduction to transport pressure as integrated special function
- All versions are available with tanks which can be assembled under the device with CE marking also available with SQL and ASME approval
- The service carts can be mounted on a trailer

For liquid storage

L057R01

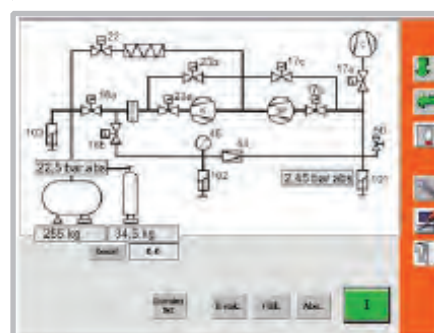
SF₆ gas service cart

Operation, indication of most important process parameters and illustration of selected gas flow on 10" touch panel

Indication units selectable on the touch panel (e. g. bar / mbar/ kg)



L057R01 model with
TÜV SÜD certified
performance data



10" touch panel

Technical data:

Dimensions: L 1,850 mm, W 950 mm, H 1,220 mm

Weight: 640 kg

L057R..

Economy Series

For liquid storage

L057R11

SF₆ gas service cart

Operation via function selector switch and Start / Stop key

Indication of the most important process parameters via 3.6" panel



3,6" Panel

Technical data:

Dimensions: L 1,850 mm, W 950 mm, H 1,220 mm

Weight: 640 kg

L057R..

SF₆ gas service cart

Standard equipment:

TM 5.0 B oilfree compressor (5.7 m ³ /h [at 50 Hz], 50 bar; 6.8 m ³ /h [at 60 Hz], 50 bar)
Oilfree suction pump for recovery of SF ₆ (15 m ³ /h, final vacuum < 1 mbar)
Vacuum pump for evacuation of air (40 m ³ /h, final vacuum < 1 mbar)
Evaporator
Dry filter
Particle filter
Digital weighing scales for SF ₆ bottles
5 m long storage connecting hose DN8 with coupling tongue part DN20
Fork lift provision
Frame with crane eyelets
Tool box
Fixing and steerable rollers
Different wrenches
Paint: orange (RAL 2004)
2 operating manuals in German, English or French

Operating voltage for all service carts (3-phase current ranges to be selected):

208 - 240 V / 60 Hz	6-057SP-R011
380 - 460 V / 50 Hz or 380 - 420 V / 60 Hz	6-057SP-R012

L057R..**Economy Series**

L057R..

SF₆ gas service cart

Mounted on a pressure tank / stowage



L057R01 with 300 l pressure tank

Optional equipment (mounted) at an extra charge:

	Storage capacity	Length mm	Width mm	Height mm	Net weight	Article No.
300 l / 50 bar pressure tank in accordance with EC 97/23 regulations and CE marked with electronic weight indication, fixing and steerable rollers	280 kg	1,850	950	1,725	1,050 kg	B171R01L057
600 l / 50 bar pressure tank in accordance with EC 97/23 regulations and CE marked with electronic weight indication, fixing and steerable rollers	580 kg	2,000	950	1,935	1,270 kg	B171R02L057
300 l / 50 bar pressure tank in accordance with EC 97/23 regulations and CE marked with electronic weight indication, chassis with solid tired wheels	280 kg	2,500	1,050	1,835	1,250 kg	B172R01L057
600 l / 50 bar pressure tank in accordance with EC 97/23 regulations and CE marked with electronic weight indication, chassis with solid tired wheels	580 kg	2,500	1,050	2,015	1,550 kg	B172R02L057
Stowage including 5 SF ₆ -bottles with electronic weight indication, chassis with solid tired wheels	5 x 40 kg	2,500	1,050	2,015	1,320 kg	B175R01L057

L057R..

SF₆ gas service cart

Can be mounted on a trailer with the following accessories:



Device including stowage with weighing device
with 5 SF₆ bottles on a trailer B175R11L057

Technical data:

Dimensions: L 4,500 mm, W 1,700 mm, H 2,280 mm
Max. admissible total weight: 2,000 kg

2 axle car trailer TÜV approved, stowage with weighing device with 5 SF ₆ -bottles, tarpaulin, side and back walls opened by pneumatic springs included	B175R11L057
2 axle car trailer TÜV approved, stowage with weighing device without SF ₆ -bottles, tarpaulin, side and back walls opened by pneumatic springs included	B175R10L057

L057R..**Economy-Serie**

L057R..

SF₆ gas service carts**Optional equipment (mounted) at an extra charge for all service carts of the Economy series:**

Additional price for electrical special voltage 440 - 480 V / 60 Hz 3-phase current	6-057SP-R014
Additional price for electrical special voltage 200 V / 50 - 60 Hz 3-phase current	6-057SP-R017
Additional price for electrical special voltage 210 - 240 V / 50 Hz 3-phase current	6-057SP-R018
Additional price for electrical special voltage 600 V / 60 Hz 3-phase current	6-057SP-R019
63 m ³ /h vacuum pump, final vacuum < 1 mbar	6-057VP-R001
100 m ³ /h vacuum pump, final vacuum < 1 mbar	6-057VP-R002
40 m ³ /h two-stage vacuum pump with exhaust filter, final vacuum < 2 x 10 ⁻³ mbar	6-057VP-R004
Automatic control and switching off of the individual functions (only for L057R01) (evacuation, filling, recovery of SF ₆)	6-057AU-R001
Dew point control for dry filter (only for L057R01)	6-057TF-R001
Dew point control for dry filter (only for L057R11)	6-057TF-R011
Removable sheet metal cover of the complete service cart	6-057BL-R001
Tarpaulin	6-057KA-R001
Chassis with solid tired wheels Ø 400 mm	6-057FG-R001

Optional accessories at an extra charge for all Economy service carts:

5 m long rubber hose DN20 with coupling tongue part DN20 on both ends	6-1017-R050
10 m long rubber hose DN20 with coupling tongue part DN20 on both ends	6-1017-R100
5 m long wire-braided hose DN20 with coupling tongue part DN20 on both ends	6-1024-R050
10 m long wire-braided hose DN20 with coupling tongue part DN20 on both ends	6-1024-R100
Remote control via PC, LAN connection (only for L057R01)	6-0004-R215
Additional operating manual on CD-ROM	6-0004-R213

Spare parts kits for L057R..:

Maintenance package for L057R.. with standard vacuum pump (40 m ³)	6-1048-R401
Maintenance package for L057R.. with 6-057VP-R001 / R002 vacuum pump (63 / 100 m ³)	6-1048-R421
Maintenance package for L057R.. with two-stage 6-057VP-R004 vacuum pump (40 m ³)	6-1048-R422
Spare parts kit for compressor	6-1010-R011

Packing for L057R..:

Packing for L057R..	3-751-R010-C
Packing for L057R.. with 6-057FG-R001 as option (chassis)	3-788-R023-C
Packing for L057R.. with 6-057BL-R001 as option (sheet metal covering)	3-788-R024-C
Packing for L057R.. with pressure tank (steerable and fixing rollers)	3-751-R011-C
Packing for L057R.. with pressure tank (chassis)	3-788-R011-C
Packing for L057R.. with stowage and weighing device	3-788-R012-C
Transport pallet for L057R.. mounted on a trailer	3-688-R004-C

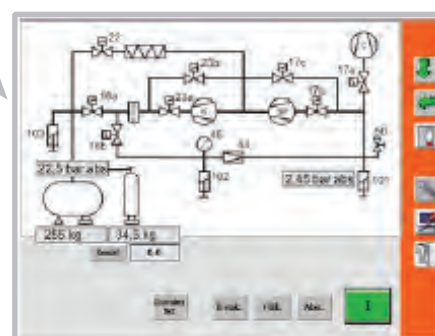
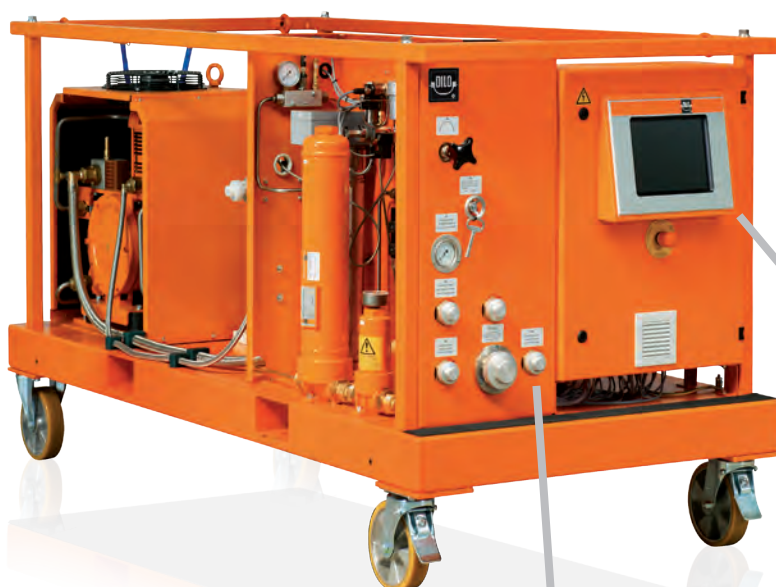
For liquid storage

L170R01

SF₆ gas service cart



L170R01 model with
TÜV SÜD certified
performance data



10" Touchpanel

Additional DN20 connecting coupling for evacuation and filling or gas recovery (K177R01 option)

Technical data:

Dimensions: L 2,250 mm, W 1,050 mm, H 1,220 mm

Weight: 890 kg

L170R01 / L280R.. / L550R..

Mega Series

L170R01

SF₆ gas service cart

Standard equipment:

B110R11 oilfree compressor (17 m ³ /h [at 50 Hz], 50 bar) (13 m ³ /h [at 60 Hz], 50 bar)
Oilfree suction pump for recovery of SF ₆ (35 m ³ /h, final vacuum < 1 mbar)
Vacuum pump for evacuation of air (63 m ³ /h, final vacuum < 1 mbar)
Operating and indication of the most important process parameters via 10" touch panel
DILO couplings DN20 and DN40
Evaporator
Dry filter
Particle filter
Indicating instruments in bar / mbar
Digital weighing scales for SF ₆ bottles
5 m long storage connecting hose DN8 with coupling tongue part DN20
Fork lift provision
Frame with crane eyelets
Tool box
Fixing and steerable rollers
Different wrenches
Paint: orange (RAL 2004)
2 operating manuals in German, English or French

Operating voltage for service carts (3-phase current ranges to be selected):

208 - 240 V / 60 Hz	6-170SP-R011
380 - 460 V / 50 Hz	6-170SP-R012
380 - 420 V / 60 Hz	6-170SP-R013

L170R01

SF₆ gas service cart

Mounted on a pressure tank / stowage



L170R01 with 5 SF₆-bottles



L170R01 with 600 l pressure tank

Optional equipment (mounted) at an extra charge:

	Storage capacity	Length mm	Width mm	Height mm	Net weight	Article No.
300 l / 50 bar pressure tank in accordance with EC 97/23 regulations and CE marked with electronic weight indication, chassis with solid tired wheels	280 kg	2,500	1,050	1,835	1,500 kg	B172R01L170
600 l / 50 bar pressure tank in accordance with EC 97/23 regulations and CE marked with electronic weight indication, chassis with solid tired wheels	580 kg	2,500	1,050	2,015	1,800 kg	B172R02L170
Stowage including 5 SF ₆ -bottles with electronic weight indication, chassis with solid tired wheels	5 x 40 kg	2,500	1,050	2,015	1,570 kg	B175R01L170

L170R01 / L280R.. / L550R..

Mega Series

L170R01

SF₆ gas service cart

Can be mounted on a trailer with the following accessories:



Device including stowage with weighing device
with 5 SF₆ bottles on a trailer B175R11L057

Technical data:

Dimensions: L 4,500 mm, W 1,700 mm, H 2,280 mm
Max. admissible total weight: 2,500 kg

2 axle car trailer TÜV approved, stowage with weighing device with 5 SF ₆ -bottles, tarpaulin, side and back walls opened by pneumatic springs included	B175R11L170
2 axle car trailer TÜV approved, stowage with weighing device without SF ₆ -bottles, tarpaulin, side and back walls opened by pneumatic springs included	B175R10L170

L170R01

SF₆ gas service cart

Optional equipment (mounted) at an extra charge for all service carts of the L170R01 series:

Additional price for electrical special voltage 440 - 480 V / 60 Hz 3-phase current	6-170SP-R014
Additional price for electrical special voltage 200 V / 50 Hz 3-phase current	6-170SP-R016
Additional price for electrical special voltage 200 V / 60 Hz 3-phase current	6-170SP-R017
Additional price for electrical special voltage 210 - 240 V / 50 Hz 3-phase current	6-170SP-R018
Additional price for electrical special voltage 600 V / 60 Hz 3-phase current	6-170SP-R019
100 m ³ /h vacuum pump, final vacuum < 1 mbar	6-170VP-R001
200 m ³ /h vacuum pump, final vacuum < 1 mbar	6-170VP-R002
40 m ³ /h two-stage vacuum pump with exhaust filter, final vacuum < 2 x 10 ⁻³ mbar	6-170VP-R003
65 m ³ /h two-stage vacuum pump with exhaust filter, final vacuum < 2 x 10 ⁻³ mbar	6-170VP-R004
Automatic control with switching off of the individual functions (evacuation, filling, recovery of SF ₆)	6-170AU-R001
Dew point control for dry filter	6-170TF-R001
Removable sheet metal cover for complete service cart	6-170BL-R001
Tarpaulin	6-170KA-R001
Chassis with solid tired wheels Ø 400 mm	6-170FG-R001
Additional DN20 coupling for evacuation and gas recovery or filling at the same time (available for 63 m ³ /h < 1mbar standard vacuum pump)	K177R01

Optional accessories at an extra charge for all service carts of the L170R01 series:

5 m long rubber hose DN20 with coupling tongue part DN20 on both ends	6-1017-R050
7 m long rubber hose DN20 with coupling tongue part DN20 on both ends	6-1017-R070
10 m long rubber hose DN20 with coupling tongue part DN20 on both ends	6-1017-R100
5 m long rubber hose DN40 with coupling tongue part DN40 on both ends	6-1075-R050
10 m long rubber hose DN40 with coupling tongue part DN40 on both ends	6-1075-R100
5 m long wire braided hose DN40 with coupling tongue part DN40 on both ends	6-1076-R050
10 m long wire braided hose DN40 with coupling tongue part DN40 on both ends	6-1076-R100
5 m long rubber hose DN40 with coupling tongue part DN40 on one end and coupling tongue part DN20 on the other end	6-1079-R050
10 m long rubber hose DN40 with coupling tongue part DN40 on one end and coupling tongue part DN20 on the other end	6-1079-R100
5 m long wire braided hose DN40 with coupling tongue part DN40 on one end and coupling tongue part DN20 on the other end	6-1080-R050
10 m long wire braided hose DN40 with coupling tongue part DN40 on one end and coupling tongue part DN20 on the other end	6-1080-R100
Triple manifold, coupling DN40 to 3 x coupling DN20 with ball valve	3-718-R006
Coupling tongue part DN40 with transition piece to 2 x DN20 2 rubber hoses DN20 (10 m long) with coupling tongue part DN20	6-1235-R001
Remote control via PC, LAN connection	6-0004-R215
Additional operating manual on CD-ROM	6-0004-R213

L170R01 / L280R.. / L550R..

Mega Series

L170R01

SF₆ gas service cart**Spare parts kits for L170R01:**

Maintenance package for L170R01 with standard / 6-170VP-R001 vacuum pump (63 / 100 m ³)	6-1048-R501
Maintenance package for L170R01 with 6-170VP-R002 vacuum pump (200 m ³)	6-1048-R502
Maintenance package for L170R01 with two-stage 6-170VP-R003 / R004 vacuum pump (40 / 65 m ³)	6-1048-R503
Spare parts kit for compressor	6-1091-R111

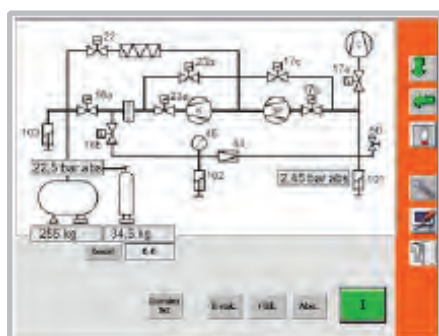
Packing for L170R01:

Packing for L170R01	3-788-R010-C
Packing for L170R01 with 6-170FG-R001 as option (chassis)	3-788-R013-C
Packing for L170R01 with 6-170BL-R001 as option (sheet metal covering)	3-788-R014-C
Packing for L170R01 with pressure tank	3-788-R011-C
Packing for L170R01 with stowage and weighing device	3-788-R012-C
Transport pallet for L170R01 mounted on a trailer	3-688-R005-C

For liquid storage

L280R..

SF₆ gas service cart



10" touch panel



Technical data:

Dimensions: L 2,600 mm, W 1,400 mm, H 1,500 mm

Weight L280R01: 1,350 kg

Weight L280R02: 1,430 kg

L170R01 / L280R.. / L550R..

Mega Series

L280R..

SF₆ gas service cart**L280R01**Oilfree suction pump for recovery of SF₆ (35 m³/h, final vacuum < 1 mbar)**L280R02**Screw pump for recovery of SF₆ (100 m³/h, final vacuum < 1mbar)**Standard equipment for L280R01 and L280R02:**

VTOG oilfree compressor (28 m ³ /h [at 50 Hz], 50 bar) (22 m ³ /h [at 60 Hz], 50 bar)
Vacuum pump for evacuation of air (63 m ³ /h, final vacuum < 1 mbar)
Operating and indication of the most important process parameters via 10" touch panel
DILO couplings DN20 and DN40
Evaporator
Dry filter
Particle filter
Indicating instruments in bar / mbar
Digital weighing scales for SF ₆ bottles
5 m long storage connecting hose DN8 with coupling tongue part DN20
Fork lift provision
Frame with crane eyelets
Tool box
Fixing and steerable rollers
Different wrenches
Paint: orange (RAL 2004)
2 operating manuals in German, English or French

Operating voltage for service carts (3-phase current ranges to be selected):

380 - 440 V / 50 Hz	6-280SP-R001
208 - 240 V / 50 Hz	6-280SP-R002

L280R..

SF₆ gas service cart

Mounted on a pressure tank

Optional equipment (mounted) at an extra charge:

	Storage capacity	Length mm	Width mm	Height mm	Net weight	Article No.
300 l / 50 bar pressure tank in accordance with EC 97/23 regulations and CE marked with electronic weight indication, chassis with solid tired wheels (width 105 mm)	280 kg	3,070	1,400	2,070	1,900 kg	B177R01

**L280R..
SF₆ gas service cart**

Optional equipment (mounted) at an extra charge for all service carts of the L280R.. series:

Additional price for electrical special voltage 208 - 240 V / 60 Hz 3-phase current	6-280SP-R003
Additional price for electrical special voltage 380 - 440 V / 60 Hz 3-phase current	6-280SP-R004
Additional price for electrical special voltage 480 V / 60 Hz 3-phase current	6-280SP-R005
Additional price for electrical special voltage 600 V / 60 Hz 3-phase current	6-280SP-R006
100 m ³ /h vacuum pump, final vacuum < 1 mbar	6-280VP-R001
200 m ³ /h vacuum pump, final vacuum < 1 mbar	6-280VP-R002
40 m ³ /h two-stage vacuum pump with exhaust filter, final vacuum < 2 x 10 ⁻³ mbar	6-280VP-R003
65 m ³ /h two-stage vacuum pump with exhaust filter, final vacuum < 2 x 10 ⁻³ mbar	6-280VP-R004
Second dry filter	6-280TR-R001
Second evaporator	6-280VD-R001
Automatic control with switching off of the individual functions (evacuation, filling, recovery of SF ₆)	6-280AU-R001
Dew point control for dry filter	6-280TF-R001
Tarpaulin	6-280KA-R001
Chassis with solid tired wheels Ø 400 mm (for service carts without storage tank)	6-280FG-R001

Optional accessories at an extra charge for all service carts of the L280R.. series:

5 m long rubber hose DN20 with coupling tongue part DN20 on both ends	6-1017-R050
7 m long rubber hose DN20 with coupling tongue part DN20 on both ends	6-1017-R070
10 m long rubber hose DN20 with coupling tongue part DN20 on both ends	6-1017-R100
5 m long rubber hose DN40 with coupling tongue part DN40 on both ends	6-1075-R050
10 m long rubber hose DN40 with coupling tongue part DN40 on both ends	6-1075-R100
5 m long wire braided hose DN40 with coupling tongue part DN40 on both ends	6-1076-R050
10 m long wire braided hose DN40 with coupling tongue part DN40 on both ends	6-1076-R100
5 m long rubber hose DN40 with coupling tongue part DN40 on one end and coupling tongue part DN20 on the other end	6-1079-R050
10 m long rubber hose DN40 with coupling tongue part DN40 on one end and coupling tongue part DN20 on the other end	6-1079-R100
5 m long wire braided hose DN40 with coupling tongue part DN40 on one end and coupling tongue part DN20 on the other end	6-1080-R050
10 m long wire braided hose DN40 with coupling tongue part DN40 on one end and coupling tongue part DN20 on the other end	6-1080-R100
Triple manifold, coupling DN40 to 3 x coupling DN20 with ball valve	3-718-R006
Coupling tongue part DN40 with transition piece to 2 x DN20 2 rubber hoses DN20 (10 m long) with coupling tongue part DN20	6-1235-R001
Remote control via PC, LAN connection	6-0004-R215
Additional operating manual on CD-ROM	6-0004-R213

L170R01 / L280R.. / L550R..

Mega Series

L280R..

SF₆ gas service cart**Spare parts kits for L280R..:**

Maintenance package for L280R.. with standard / 6-280VP-R001 vacuum pump (63 / 100 m ³)	6-1048-R501
Maintenance package for L280R.. with 6-280VP-R002 vacuum pump (200 m ³)	6-1048-R502
Maintenance package for L280R.. with two-stage 6-280VP-R003 / R004 vacuum pump (40 / 65 m ³)	6-1048-R503
Spare parts kit (valves) for compressor	6-1011-R101
Spare parts kit (piston rings) for compressor	6-1011-R103
Spare parts kit for second 6-280TR-R001 dry filter	3-899-06

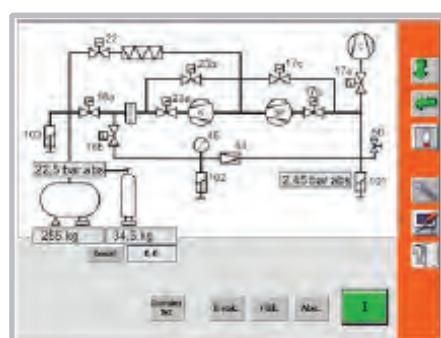
Packing for L280R..:

Packing for L280R..	3-761-R141-C
Packing for L280R.. with 6-280FG-R001 as option (chassis)	3-761-R142-C
Packing for L280R.. with pressure tank	3-761-R143-C

For liquid storage

L550R..

SF₆ gas service cart



10" touch panel



Technical data:

Dimensions: L 2,600 mm, W 1,400 mm, H 1,500 mm

Weight L550R01: 1,450 kg

Weight L550R02: 1,530 kg

L170R01 / L280R.. / L550R..

Mega Series

L550R..

SF₆ gas service cart**L550R01**Oilfree suction pump for recovery of SF₆ (35 m³/h, final vacuum < 1 mbar)**L550R02**Screw pump for recovery of SF₆ (100 m³/h, final vacuum < 1mbar)**Standard equipment for L550R01 and L550R02:**

WTOG oilfree compressor (55 m ³ /h [at 50 Hz], 50 bar) (44 m ³ /h [at 60 Hz], 50 bar)
Vacuum pump for evacuation of air (63 m ³ /h, final vacuum < 1 mbar)
Operating and indication of the most important process parameters via 10" touch panel
DILO couplings DN20 and DN40
Evaporator
Dry filter
Particle filter
Indicating instruments in bar / mbar
Digital weighing scales for SF ₆ bottles
5 m long storage connecting hose DN8 with coupling tongue part DN20
Fork lift provision
Frame with crane eyelets
Tool box
Fixing and steerable rollers
Different wrenches
Paint: orange (RAL 2004)
2 operating manuals in German, English or French

Operating voltage for service carts (3-phase current ranges to be selected):

380 - 440 V / 50 Hz	6-550SP-R001
208 - 240 V / 50 Hz	6-550SP-R002

L550R..

SF₆ gas service cart

Mounted on a pressure tank



Optional equipment (mounted) at an extra charge:

	Storage capacity	Length mm	Width mm	Height mm	Net weight	Article No.
300 l / 50 bar pressure tank in accordance with EC 97/23 regulations and CE marked with electronic weight indication, chassis with solid tired wheels (width 105 mm)	280 kg	3,070	1,400	2,070	2,000 kg	B177R01

L170R01 / L280R.. / L550R..**Mega Series**

L550R..

SF₆ gas service cart**Optional equipment (mounted) at an extra charge for all service carts of the L550R.. series:**

Additional price for electrical special voltage 208 - 240 V / 60 Hz 3-phase current	6-550SP-R003
Additional price for electrical special voltage 380 - 440 V / 60 Hz 3-phase current	6-550SP-R004
Additional price for electrical special voltage 480 V / 60 Hz 3-phase current	6-550SP-R005
Additional price for electrical special voltage 600 V / 60 Hz 3-phase current	6-550SP-R006
100 m ³ /h vacuum pump, final vacuum < 1 mbar	6-550VP-R001
200 m ³ /h vacuum pump, final vacuum < 1 mbar	6-550VP-R002
40 m ³ /h two-stage vacuum pump with exhaust filter, final vacuum < 2 x 10 ⁻³ mbar	6-550VP-R003
65 m ³ /h two-stage vacuum pump with exhaust filter, final vacuum < 2 x 10 ⁻³ mbar	6-550VP-R004
Second dry filter	6-550TR-R001
Second evaporator	6-550VD-R001
Automatic control with switching off of the individual functions (evacuation, filling, recovery of SF ₆)	6-550AU-R001
Dew point control for dry filter	6-550TF-R001
Tarpaulin	6-550KA-R001
Chassis with solid tired wheels Ø 400 mm (for service carts without storage tank)	6-550FG-R001

Optional accessories at an extra charge for all service carts of the L550R.. series:

5 m long rubber hose DN20 with coupling tongue part DN20 on both ends	6-1017-R050
7 m long rubber hose DN20 with coupling tongue part DN20 on both ends	6-1017-R070
10 m long rubber hose DN20 with coupling tongue part DN20 on both ends	6-1017-R100
5 m long rubber hose DN40 with coupling tongue part DN40 on both ends	6-1075-R050
10 m long rubber hose DN40 with coupling tongue part DN40 on both ends	6-1075-R100
5 m long wire braided hose DN40 with coupling tongue part DN40 on both ends	6-1076-R050
10 m long wire braided hose DN40 with coupling tongue part DN40 on both ends	6-1076-R100
5 m long rubber hose DN40 with coupling tongue part DN40 on one end and coupling tongue part DN20 on the other end	6-1079-R050
10 m long rubber hose DN40 with coupling tongue part DN40 on one end and coupling tongue part DN20 on the other end	6-1079-R100
5 m long wire braided hose DN40 with coupling tongue part DN40 on one end and coupling tongue part DN20 on the other end	6-1080-R050
10 m long wire braided hose DN40 with coupling tongue part DN40 on one end and coupling tongue part DN20 on the other end	6-1080-R100
Triple manifold, coupling DN40 to 3 x coupling DN20 with ball valve	3-718-R006
Coupling tongue part DN40 with transition piece to 2 x DN20 2 rubber hoses DN20 (10 m long) with coupling tongue part DN20	6-1235-R001
Remote control via PC, LAN connection	6-0004-R215
Additional operating instruction on CD-ROM	6-0004-R213

L550R..

SF₆ gas service cart

Spare parts kits for L550R..:

Maintenance package for L550R.. with standard / 6-550VP-R001 vacuum pump (63 / 100 m ³)	6-1048-R501
Maintenance package for L550R.. with 6-550VP-R002 vacuum pump (200 m ³)	6-1048-R502
Maintenance package for L550R.. with two-stage 6-550VP-R003 / R004 vacuum pump (40 / 65 m ³)	6-1048-R503
Spare parts kit (valves) for compressor	6-1012-R101
Spare parts kit (piston rings) for compressor	6-1012-R103
Spare parts kit for second 6-550TR-R001 dry filter	3-899-06

Packing for L550R..:

Packing for L550R..	3-761-R141-C
Packing for L550R.. with 6-550FG-R001 as option (chassis)	3-761-R142-C
Packing for L550R.. with pressure tank	3-761-R143-C