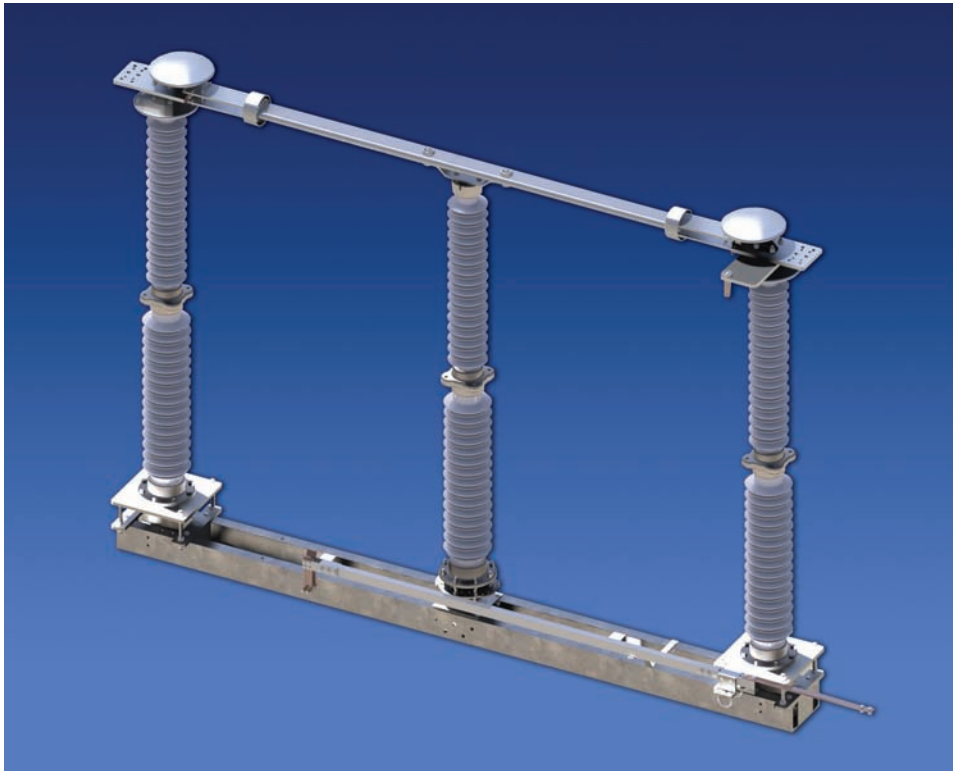


Double Side Break Switch - LD2



Robust & Reliable

The LD2 is a simple design using only the best available materials.

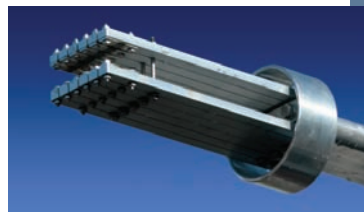
High-conductivity extruded aluminum terminals, extruded aluminum blades, stainless steel pivot shaft, aluminum pivot housing.

All parts are fabricated from extruded aluminum or machined from solid billet materials, such as 304 stainless steel and hard drawn copper.
NO CASTINGS



Technical features

- High strength hot dip galvanized steel;
- Maintenance-free dry lubricant bearings;
- Hardware on live parts are made of non-magnetic materials;
- Current carrying parts are made of high-conductivity extruded aluminum;
- Contacts are made of silver plated hard drawn copper.



Current-carrying parts

All current transfers are based on our proven rotating contact with multiple spring-loaded fingers.

Main contacts are silver plated copper to silver plated copper. The copper parts are tin plated when in contact with an aluminum surface. All tinned copper-to-aluminum interfaces are cleaned of oxidation and permanently sealed with an oxydation inhibitor.



Optional configuration

The LD2 is available in W Configuration at 123 kV

It is always shipped fully assembled as a unitized 3-phase switch completely adjusted with its linkage at the factory.

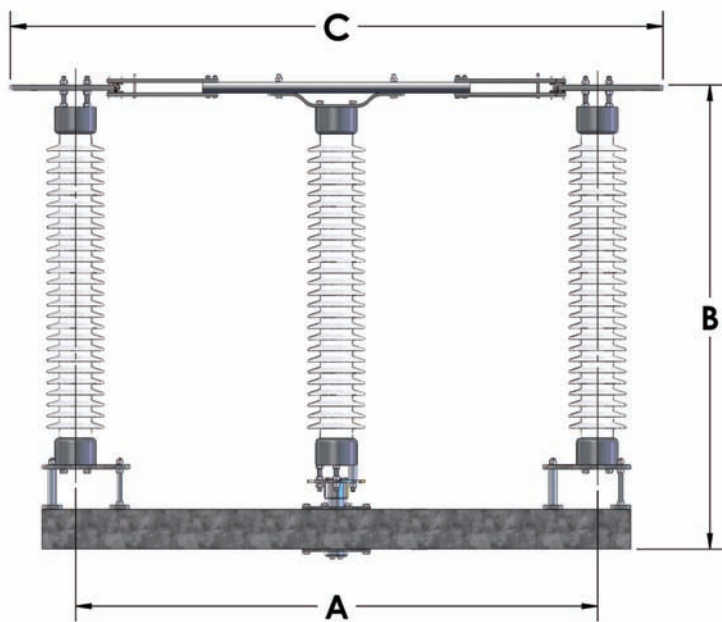
2 types are available:

- Transmission switch for longitudinal installation on a pole;
- Substation switch with 2 additional posts for fast installation on-site.

Innovation
& Quality



www.emspec.com



Dimensions & Technical Data

- Dimensions based on ANSI TR insulators.

<i>En (kV)</i>	72.5	123	145	170	245R	245	300	362
<i>BIL (kV)</i>	350	550	650	750	900	1 050	1 050	1 175
<i>A</i>	1 500	2 000	2 000	2 400	2 600	3 000	3 400	4 000
<i>B</i>	958	1 542	1 771	1 822	2 279	2 736	2 699	3 049
<i>C</i>	1 860	2 380	2 500	2 760	2 960	3 500	3 900	4 300
<i>In (A)</i>	1 200 to 3 150	1 200 to 3 150	1 200 to 3 150	1 200 to 3 150	1 200 to 3 150	1 200 to 3 150	1 200 to 3 150	1 200 to 3 150
<i>Icc (kA peak)</i>	up to 182	up to 182	up to 182	up to 182	up to 182	up to 182	up to 182	up to 182

OPTIONS:

- Parallel or perpendicular grounding switch
- Manual or motor operator
- Mechanical or electromagnetic interlock system
- Arcing horns or high speed whips.

This brochure provides a brief introduction. EMSPEC reserves the right to make changes at any time, without notice.



EMSPEC

www.emspec.com